

The Engine Room, Bendigo

Venue Information

The Engine Room

58 View Street, Bendigo

The Engine Room is on Dja Dja Wurrung Country

03 5434 6100

bvevents@bendigo.vic.gov.au

bendigovenuesandevents.com.au

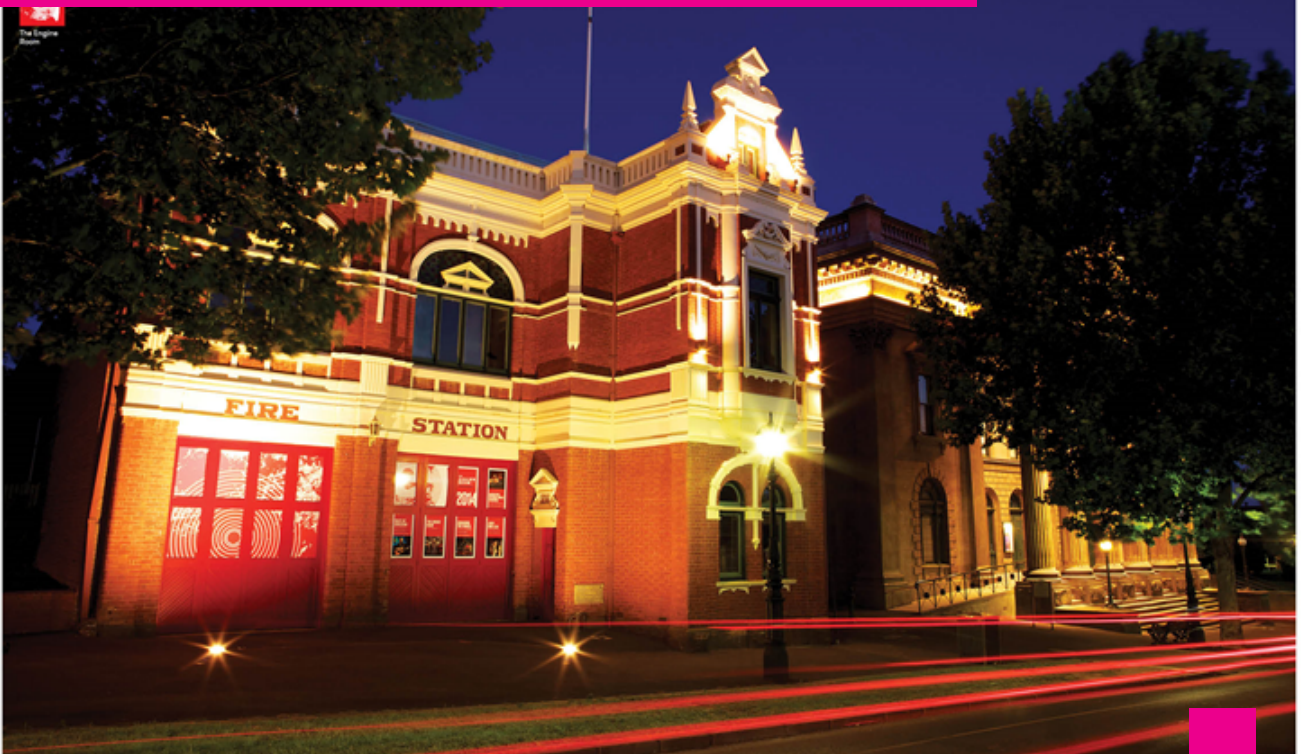


Table Of Contents

Venue Bookings & Further Enquiries	3
1. Introduction to the Engine Room, Bendigo	4
1.1 History	4
1.2 Foyer, Ticketing and Bar	4
1.3 Seating	4
1.4 Air Conditioning	5
1.5 Parking and Local Traffic	5
1.6 Smoking Policy	5
1.7 Emergency Warning Systems	5
2. Technical Information	6
2.1 Hire Options	6
2.2 Stage Description	6
2.3 Stage Dimensions	6
2.4 Stage Curtains	6
2.5 Access to Room	6
2.6 Access Equipment	7
2.7 Care of Venue	7
2.8 Electrical	7
3. Lighting Information	7
3.1 Suspension System	7
3.2 House Lights	7
3.3 Lighting Control	7
3.4 Stage Lanterns (Standard Rig)	8
3.5 Cabling	8
3.6 Lighting Notes	8
3.7 Patching	8
4. Audio Visual	9
4.1 Equipment	9
5. Audio Information	9
5.1 Control and Amplification	9
5.2 FOH Speakers	9
5.3 Playback Equipment	9
5.4 Microphones and Accessories	9
5.5 Cabling	9
5.6 Line Patching	9
6. Backstage Facilities	10
6.1 Stage Management	10
6.2 Dressing Rooms	10
6.3 Facilities	10
6.4 Laundry	10
6.5 Piano	11
6.6 Other Equipment and Facilities	11
7. Appendix	12
7.1 Whole Venue Floor Plan	12
7.2 Stage Plan	13
7.3 Standard Lighting Rig	14

Venue Bookings & Further Enquiries

All enquiries regarding the hire of this venue should be directed to:

Bendigo Venues & Events

Events Department

03 5434 6100

bveevents@bendigo.vic.gov.au



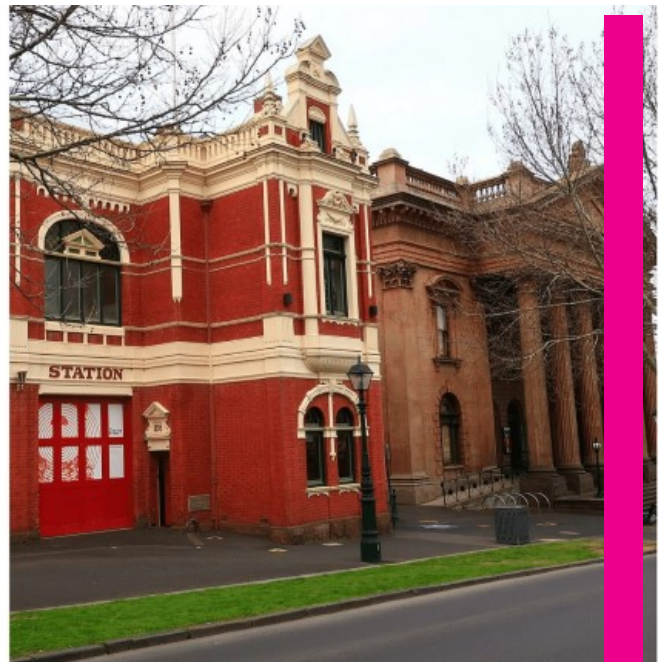
**ENGINE
ROOM**

Street Address:

Old Fire Station
54 View Street
BENDIGO VIC 3550

Mailing Address:

Bendigo Venues & Events
PO Box 733
BENDIGO VIC 3550



1. Introduction to the Engine Room, Bendigo

1.1 History

Located a short walk up View Street from The Capital, the original Fire Station served the Bendigo community up until 1983 when the Bendigo CFA Brigade relocated to its current home in Hargreaves Street. In the years following its closure it served as a home for community radio station 3CCC. In 1987 it was purchased by three local councils - Strathfieldsaye, Marong and Eaglehawk with the aid of a State Government Grant and was absorbed into the then Bendigo Regional Arts Centre, which is now operated by Bendigo Venues & Events (BV&E).

Today the venue is a vibrant community space utilised as both performance and rehearsal space. The former Engine Room is a drama studio, incorporating flexible staging, seating and lighting and the former sleeping quarters and drill hall serve as a dance studio.

The Old Fire Station building provides for a variety of activities, ranging from drama classes, workshops and dance to theatrical performances.

The Engine Room is a black box studio with limited but appropriate audio and lighting facilities, and seating for up to 120 people.

The upstairs Dance Studio has a maximum capacity of 80 persons depending on configuration.

Please discuss the specifics of this space with the Events Team.

The office spaces on both ground floor and first floor are unavailable for hire.

1.2 Foyer, Ticketing and Bar

The venue does not have a foyer area. From the street entry door, patrons have a few steps to take to enter the black box theatre space. Due to the limited space to hold or greet patrons prior to them reaching the seating bank, generally tickets are checked in the black box space.

Any Box Office/Ticketing or Bar required for your event needs to be set-up within the main room or this small entry area. Please discuss requirements with the Events Team prior to your event.

1.3 Seating

The Engine Room can seat up to 120 patrons depending on audience configuration and the size of the performance area. A variety of different standard seating plans is available.

The venue includes a tiered seating bank of 90 seats that can be retracted away when not in use. The tiered seating bank consists of 7 rows of upholstered fixed seats with flip-down backs. To increase the seating capacity to 120, single loose chairs are available. Please discuss requirements with the Events Team.

With the tiered seating bank retracted, a variety of alternative seating arrangements are possible with a smaller performance area. Seating varieties in the past have included cabaret seating for performances and training sessions or open space for a conference break out space.



1.4 Air Conditioning

The Engine Room space is air-conditioned for your comfort with controls located adjacent to the front entrance doors.

Bendigo experiences hot summers and very cool winters that are all made more comfortable for patrons with the efficient air conditioning and heating. Your audience will remain comfortable from the moment they enter the venue right through to their departure.

1.5 Parking and Local Traffic

Car parking is available at the nearby Park Road or Queen Elizabeth Oval (QEO) car parks. On-street parking is also available within short distances of the venue. Please refer to the map below.

A Car Parking Guide to the central business area of Bendigo, including the Ulumbarra Theatre Precinct can be viewed or downloaded here on PDF – [Click for Car Parking Guide](#)

1.6 Smoking Policy

As with all venues managed by Bendigo Venue & Events, The Engine Room is a smoke-free location.

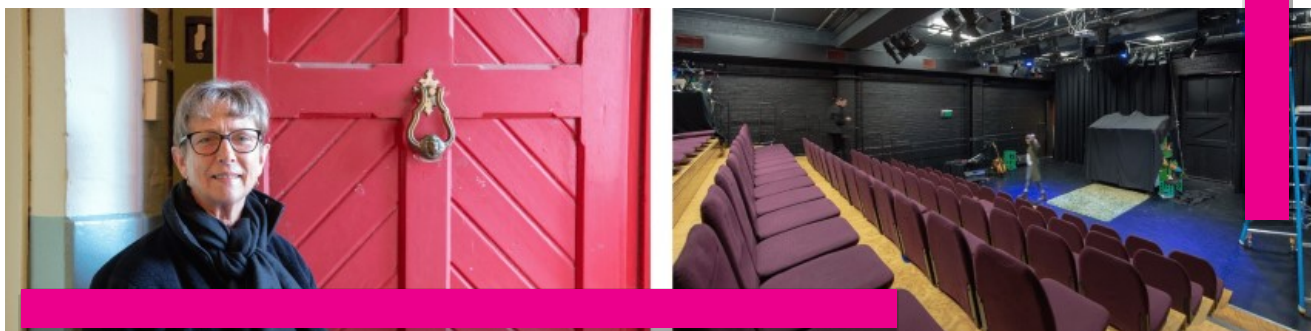
There is no smoking permitted anywhere inside or within five (5) metres of any external doorway.

1.7 Emergency Warning Systems

All Bendigo Venues & Events venues are equipped with appropriate fire detection and emergency systems. The Engine Room is no exception and operates a state-of-the-art detection system.

Any use of theatrical haze, smoke, incense, candles or other items emitting fumes needs to be authorised by the Venue's Supervising Technician prior to being activated. Certain areas of the building can be isolated to allow these types of effects to take place without signalling an evacuation, but it is crucial to inform Venue staff prior to using them.

In the event of an emergency scenario, all directions from the Supervising Staff at the venue need to be followed. An induction will be held by the Supervising Technician at the initial meeting.



2. Technical Information

2.1 Hire Options

Two hire options are available for The Engine Room:

1. Venue excluding the use of Technical Equipment and Technician (hirer given key/fob to access)
or
2. Venue inclusive of Technical Equipment and Technician.

The options may incur different costs and procedures. Please contact Bendigo Venues & Events to discuss your requirements and the best approach for your event.

2.2 Stage Description

- Open plan flat floor with Masonite sheeting surface painted black
- No designated wing-space
- Brick back and sidewalls are painted dark grey
- Additional PDF and DWG files available on request

2.3 Stage Dimensions

- **Width** 10950mm
- **Physical Length** 10400mm with seats retracted, 6220mm with seats deployed
- **Useable Length** 5220mm allowing 1000mm for audience access
- **Height to pipe grid** 4100mm

2.4 Stage Curtains

One set of track-mounted black wool upstage tabs located 330mm from rear wall with centre opening.

Height: 3900mm **Width:** 5000mm each curtain, Qty. 2

2.5 Access to Room

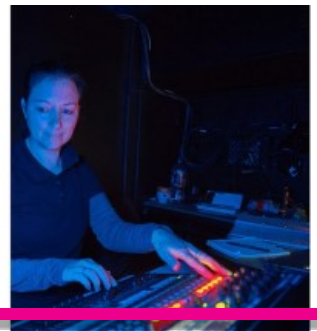
Backstage access is through double doors leading directly from the rear courtyard to the stage area. Vehicles can be driven in to this courtyard to unload with access to this being via the rear compound of The Capital. Access to the rear loading area is through a side hinged gate.

Double Door Clearance Dimensions

Height 3275mm
Width 2715mm

Gate Clearance Dimensions

Width 2800mm



2.6 Access Equipment

A platform ladder is available to reach the pipe grid and is for BV&E staff use only.

2.7 Care of Venue

The Engine Room is a mix of old and new and is a highly valued asset amongst the region's community. BV&E requests your cooperation in assisting us to respect this value and to contribute to its longevity by protecting it from any damage. The building is Heritage listed.

2.8 Electrical

All portable electrical appliances and equipment must be fitted with a current test tag complying with AS/NZS 3760 3760 including stage props or practicals containing electrical distribution of any voltage.

3 Phase Outlets

2 x 32amp 5 pin

4 x 40amp 5 pin (two in use for dimmer racks)

All located in the dimmer room

There are no 3-phase extension cables available

General Power Outlets

2 x 10A double outlets on the wall both sides of the stage

1 x 10A double outlet on the back wall up stage

Audio Power Outlets (Green)

1 x 10A double outlet up stage opposite prompt side of the stage

1 x 10A double outlet Control Position

3. Lighting Information

3.1 Suspension System

The suspension system consists of a dead hung steel pipe grid across the entire stage and seating area.

- The pipe grid is 4100mm from the stage floor.
- Load rating is a maximum of 10kg per metre uniformly distributed load
- Point load is a maximum of 20kg
- There are no additional rigging points.

3.2 House Lights

Fluorescent work lights provide adequate lighting for all non-performance conditions and are operated from wall switches located Up Stage Prompt Side. A separate security light is situated in the centre of the ceiling and must remain on, unless the stage equipment is utilised.

When using the stage equipment, the house light units are LED Mini Par56 controlled through the lighting console.

3.3 Lighting Control

The control position is at the rear of the tiered seating bank that incorporates a desk to accommodate house lighting, audio and audio-visual consoles and controllers. If more space is required, a trestle table can be added to this control position, but eight (8) seats are withdrawn from use or sale for this configuration.

Lighting Console: LSC Minim

Features include:

- 24 Channel faders
- 12 playbacks

Dimmer Racks:

Total Dimmer Racks: 2 x LSC GEN VI wall mount
Dimmer Location: Dimmer Room
Total Dimmers: 24 @ 2.4Kw per dimmer

3.4 Stage Lanterns (Standard Rig)

Profiles

Make	Model/ Type	Beam Angle	Detail / Acc	Wattage	QTY
Strand	SL	15° to 32°		600w	5

Spots

Make	Model	Beam Angle	Detail / Acc	Watt	QTY
Selecon	Acclaim PC		Barn Doors	650w	4
LDR	Aria PC		Barn Doors	1000w	4
Selecon	Fresnel		Barn Doors	1200w	10
Proshop	Quad18 LED	25 °	RGBW	144w	4

House Lights

Make	Model	Beam Angle	Detail/ Acc	Watt	QTY
Showtec	LED Mini Par56	60 °	N/A	28w	8

3.5 Cabling

The Engine Room has sufficient quantity of 240V Extension Cables for standard rig configuration.

3.6 Lighting Notes

The standard lighting rig is set but can be adjusted depending on the hire options adopted. Additional Lighting Equipment is available upon discussion which includes: Intelligent Lighting console and additional Stage Lanterns. Your requirements should be discussed with the Events Team as early as possible.

All lanterns are complete with hook clamp and colour frames. There are 72 patch outlets. Two vertical boom pipes are located adjacent to seating bank front edge. DMX distribution also available in grid Prompt Side.

3.7 Patching

Location	QTY	Numbering - PS to OP
FOH Over Seats	15	31 - 45
FOH Over Seats	15	16 - 30
Edge of Seats	9	C1 – C9
Mid-Stage	9	B1 – B9
Mid-Stage	15	1 - 15
Upstage	9	A1 – A9

4. Audio Visual

4.1 Equipment

- **Projector:** Epson EB-L520U suspended from the pipe grid with remote control.
- Grandview GRIP200C (16:10) motorised 200" front projection screen located upstage suspended from the pipe grid with remote control.
- Screen location is shown on plan mounted 970mm from rear wall with centre of screen being centre of the room, not centre of the tiered seating bank.
- **Screen dimensions:** **Height** 2600mm, **Width** 4300mm with black border on all sides
- The bottom of the screen when fully deployed is 1150mm from stage floor level.

4.2 AV Playback Equipment

Make	Model	Detail / Accessories	QTY
Apple	Mac Mini	Q-Lab	1

Control position at rear of tiered seating bank or from side stage.

5. Audio Information

5.1 Control and Amplification

Audio Mixing Console: Mackie 1402-VLZ3
Speaker Management: Soundweb BLU-16

5.2 FOH Speakers

2 X EV Xi-1152 array active speakers mounted from pipe grid either side of stage area

5.3 Playback Equipment

Playback Equipment options are available upon discussion with the Events Team.

5.4 Microphones and Accessories

Make	Model	Detail / Accessories	Use	QTY
Sennheiser	E835	Wireless Handheld Microphone	Vocal	2
Shure	SM58	Microphone clip, Adjustable stand	Vocal	3
Radial	JDI	Mono passive DI		2
Radial	JDI	Stereo DI		1
K&M		Tall Boom stand		4
K&M		Short Boom stand		4

5.5 Cabling

Assortment of power, HDMI, XLR cables are available. Please discuss your show requirements with the Events Team.

Audio and lighting control loom (6m):

- 1 x DMX Input to Lighting console
- 2 x XLR lines for FOH L&R Inputs to Soundweb BLU-16
- 1 x Power extension

5.6 Line Patching

Location	QTY	Numbering	Detail
Opposite Prompt – Box A	4	M001-M004	3 pin XLR Female
	3	ER 1 – ER 3	RJ 45 data ethercon
	1	DMX A	5 pin Male
	1	SDI (on underside of box)	UHD-SDI
Prompt – Box B	4	M005-M008	3 pin XLR Female
	3	ER 4 – ER 6	RJ 45 data ethercon
	1	DMX B	5 pin Male
Control Position	8	M001-M008	3 pin XLR Male
	2	FOH L, FOH R	3 pin XLR Female
	6	ER 1 – ER 6	RJ 45 data ethercon
	2	E31, FROM CT (feed to Capital)	RJ 45 data ethercon
	1	PROJ (feed to projector)	RJ 45 data ethercon
	2	FROM A, TO PROJ	UHD-SDI
	2	DMX A, DMX B	5 pin Female
	1	TO DIMM (feed to dimmers)	5 pin Male

6. Backstage Facilities

6.1 Stage Management

The Engine Room has no designated side or backstage space. If a stage management position is required, it is recommended to use the upstage prompt side corner at the entrance to the technical room. Please discuss requirements with the Events Team.

6.2 Dressing Rooms

A room with a capacity of up to 10 people is located at the end of the internal corridor and can be used as a dressing room or storage space. It is also accessible via the rear courtyard. No hand basin, mirrors or make up lighting is installed in this room.

6.3 Facilities

Back stage toilets and a small kitchenette are accessible via the dressing room corridor. Front of house toilets are located adjacent to the stair well near the foyer.

6.4 Laundry

Laundry facilities are available including washing machine, clothes dryer, iron and ironing board.

Hirers need to supply their own detergent, bleach etc. The laundry is a shared space between other venues in the Capital Building.

Note: Dryer lint filter requires cleaning prior to each load.

6.5 Piano

A Kawai upright piano is available for additional hire. Neither usage nor tuning is included in the venue hire.

Tunings for our Piano are undertaken by our trusted piano tuner. Any special requirements with the tuning of the instrument should be discussed with the Events Team as early as possible so they can be discussed with our tuner.

6.6 Other Equipment and Facilities

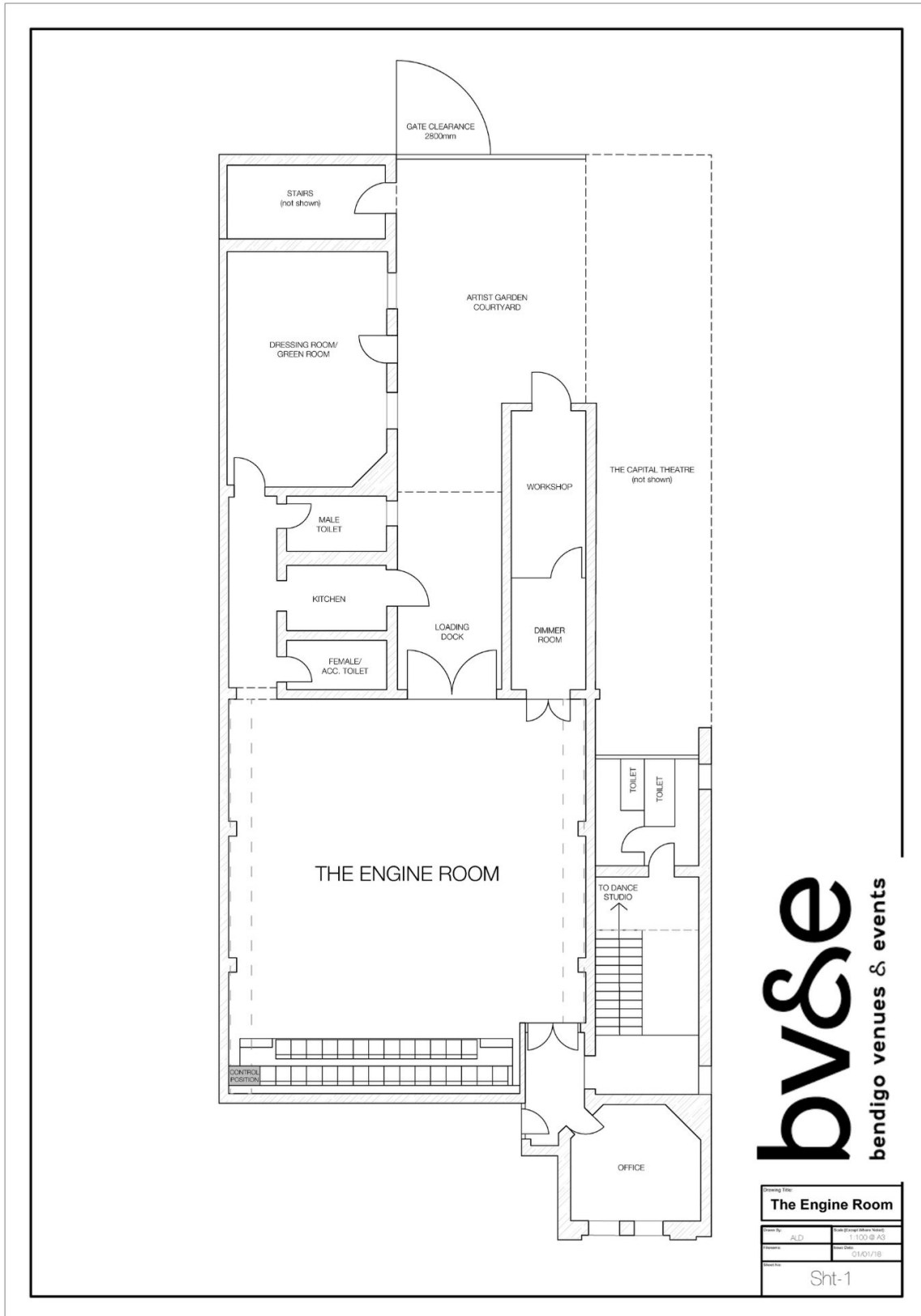
2 x Trestle Tables, 1 x Small Table, 1 x White Board, up to 40 folding chairs.

Please discuss requirements with you're the Events Team. External hires can be arranged.



7. Appendix

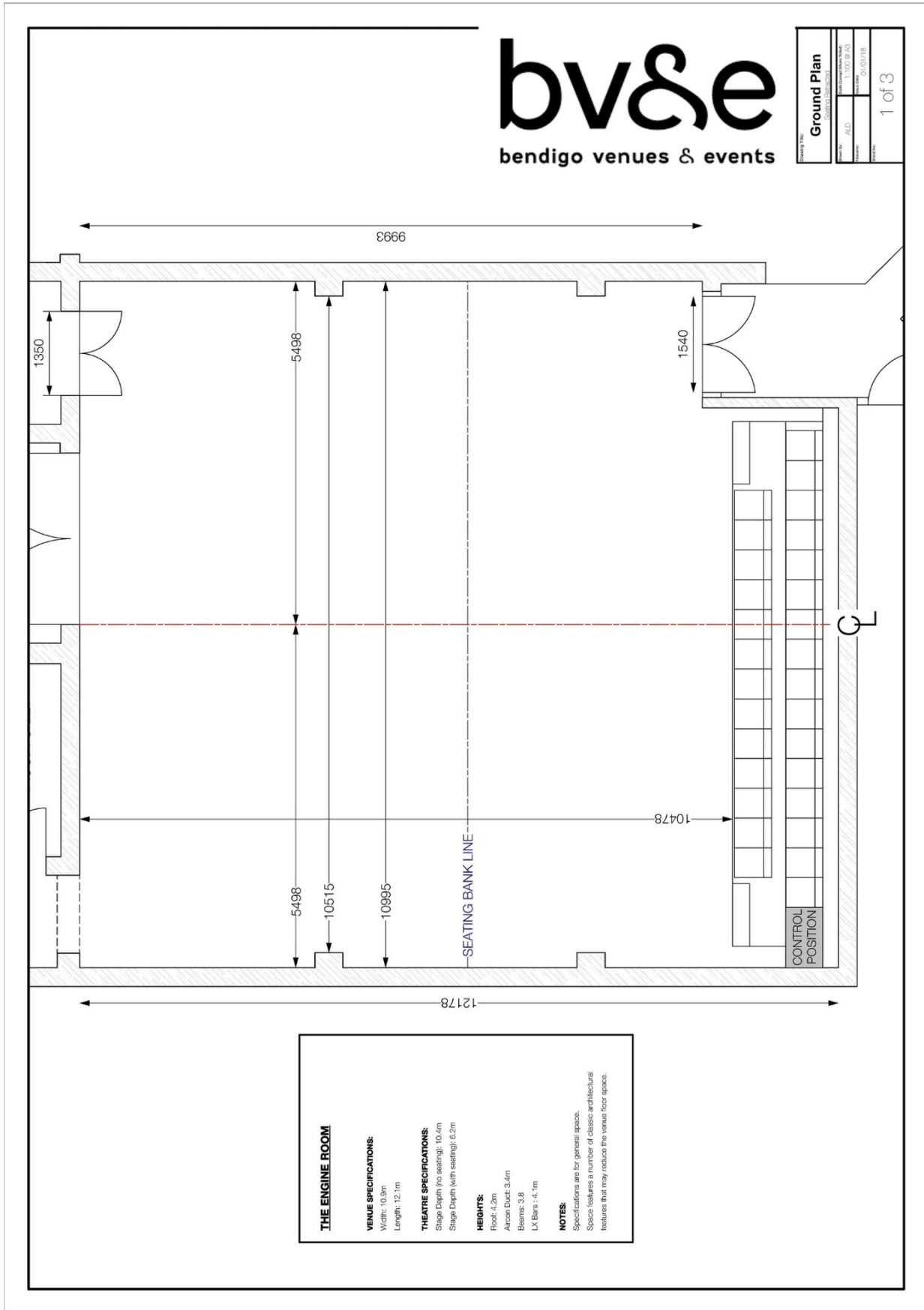
7.1 Whole Venue Floor Plan



bv&e
bendigo venues & events

Drawing Title:	
The Engine Room	
Drawn By:	ALD
Scale:	1:100 @ A3
Issue No.:	01/01/18
Sheet:	
Sht-1	

7.2 Stage Plan



7.3 Standard Lighting Rig

