

Peter Grziwotz, *Study as St Jerome for a self-portrait 2016*
charcoal on paper. Courtesy of the artist. **Winner**

View a current exhibition; research aspects of the **preparation** and **presentation** of the exhibition with reference to:

The classification of gallery/exhibition space, for example, public or commercial gallery, alternative art space or online exhibition.

Bendigo Art Gallery is a **public art space**, owned and operated by the City of Greater Bendigo (local government) and retaining an independent Board of Management who oversees investment of funds for acquisition.

The Paul Guest Prize and Paul Guest Collection have been curated by one of the curator's, Simone Bloomfield. This particular prize is exclusive to Bendigo Art Gallery.

The Paul Guest Prize is a non-acquisitive cash prize of \$12,000 which is held every two years, highlighting contemporary drawing practice in Australia. The Prize was initiated by former Family Court Judge and Olympic rower, the Honourable Paul Guest QC and encourages artists from across Australia to engage with the important medium of drawing and to create challenging and unique art works.

The prize requires a considerable amount of administration work. While the exhibition itself begins in August, the process commences back at the beginning of the year. The following steps briefly outline the process:

- Develop timeline
- Decide upon and invite a potential judge
- Liaise with Designer to create entry form
2016 was the first year that online entries were available; this meant no hardcopies were printed. We did however need to create the entry form for online use
- Receive entries up until closing. Generally we get more than 300 entries in total
- Collate entries/images for pre-selection
- Pre-select 40-45 finalists from total entries
- Notify all artists of outcome
- Confirm with finalists their intention to participate
- Organise opening event (official speakers, technical requirements, catering, staff etc)
- Organise delivery date of finalists' works through International Art Services
(Artists must organise their own transport but they are also welcome to deliver their work in person)
- Arrange layout in exhibition space
- Technical team to hang works and finalise lighting
- Judging
- Arrange the prize money
- Opening and announcement
- Liaise with publicist and media

Paul Guest Prize timeline

Entry forms available	Jan/Feb
Applications close	4pm Friday 3 June
Judge's pre-selection	Thursday 23 June
Artists advised of selection	Friday 8 July
Final delivery of artworks	Week of Monday 8 - Fri 12 August
Judging	tbc
Announcement and opening	Friday 26 August
Exhibition dates	27 August – 6 November
Collection of artworks	Week of Monday 7 – Fri 11 November

How does Bendigo Art Gallery, through this exhibition provide access to a range of audiences?

The exhibition spaces

The Paul Guest Prize is displayed in one large space within the Gallery.

The Paul Guest Collection is displayed in two smaller spaces alongside the Prize.

Part of Simone's role is to liaise and communicate regularly with the benefactor, Paul Guest. Paul initiated the prize back in 2010 and it is held every two years. Not every time, but occasionally when the prize is being held, Paul requests an exhibition of works that he has collected over the years. This year, Simone has selected some works for display using the following curatorial rationale:

This selection represents a small highlight of works from Paul's expansive collection that focuses on the notion of 'line'. Line is arguably the most basic element of art. Given Paul's appreciation of drawing – an inherently linear practice – these works have been chosen based on the premise that each artist utilises the line in vastly different ways; creating an interesting and dynamic selection of works.

The following image is of the exhibition layout. To help determine the layout, Simone uses thumbnail images of the selected works and places them onto a map of the Gallery spaces. This is not to scale but helps give the curator a visual impression of the possible layout of the space.

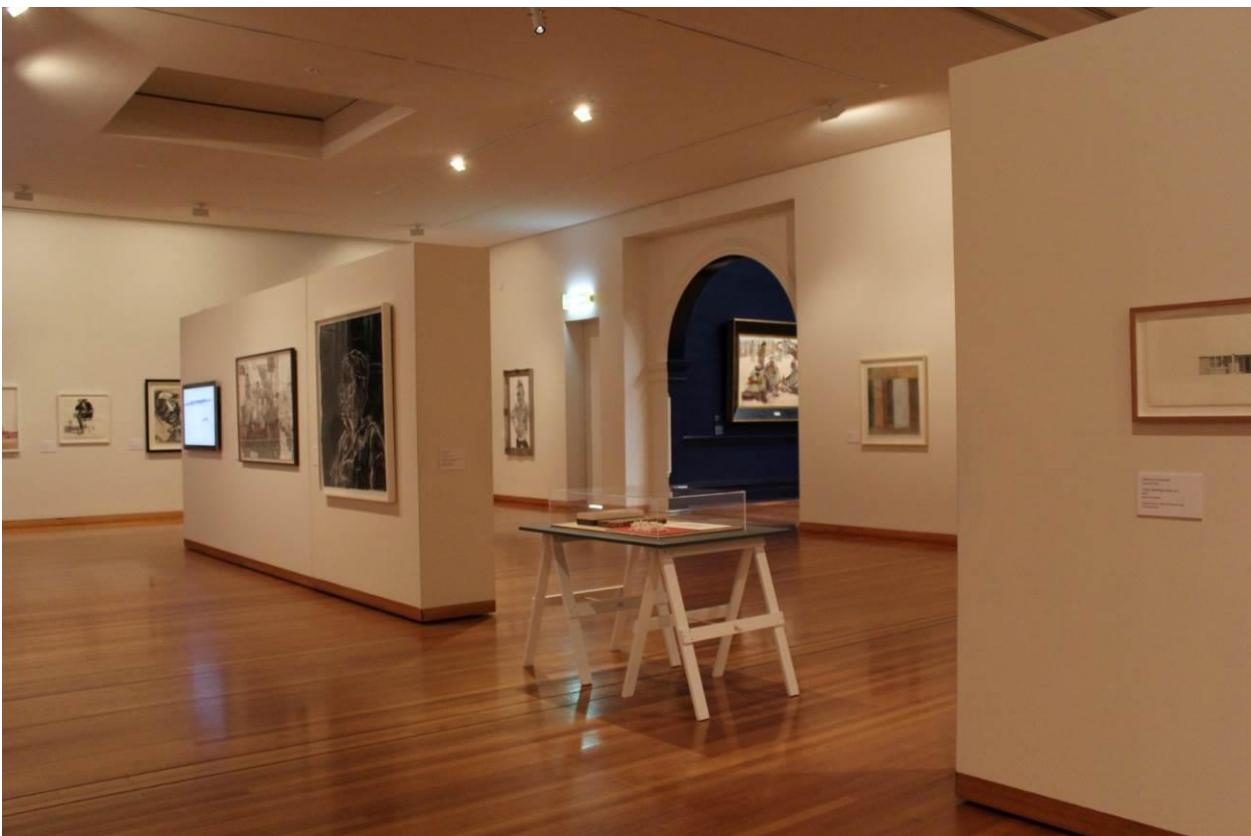
Bendigo Art Gallery

Exhibition layout – Paul Guest Collection



Bendigo Art Gallery

Installation images – Paul Guest Prize



love your gallery.

Discuss the effect of spreading the display of the artworks across ten rooms:



Analyse the effect of the white cube space; do you think the white walls compliment the artworks or detract from them? Discuss:

The approach for displaying artworks

The Paul Guest Prize presents 45 artworks – finalists in the drawing prize. A prize is like no other exhibition; while the works have been viewed and selected beforehand, it was done so by viewing jpeg files, not through viewing the works first hand. In this sense, sometimes works arrive and are not what we were first expecting.

It can be quite challenging to finalise a layout, to make sure all the works sit at ease with one another and to ensure it is 'equal' – equal and consistent lighting and equal and consistent spacing. Given it is a prize that will be judged, every effort is made to ensure all works are displayed in an even and fair manner.

Explain the effect of the spacing and grouping of the artworks and the way in which they are hung or displayed on plinths; how does this differ from the artworks on display in the Bolton, Drury and Abbott Courts at Bendigo Art Gallery?



Paul Guest (benefactor), Peter Grziwotz (winner 2016), Godwin Bradbeer (judge)